

ABI PARTNERSHIP MEETING

15 May 2019

ELMARIE VAN ROOYEN

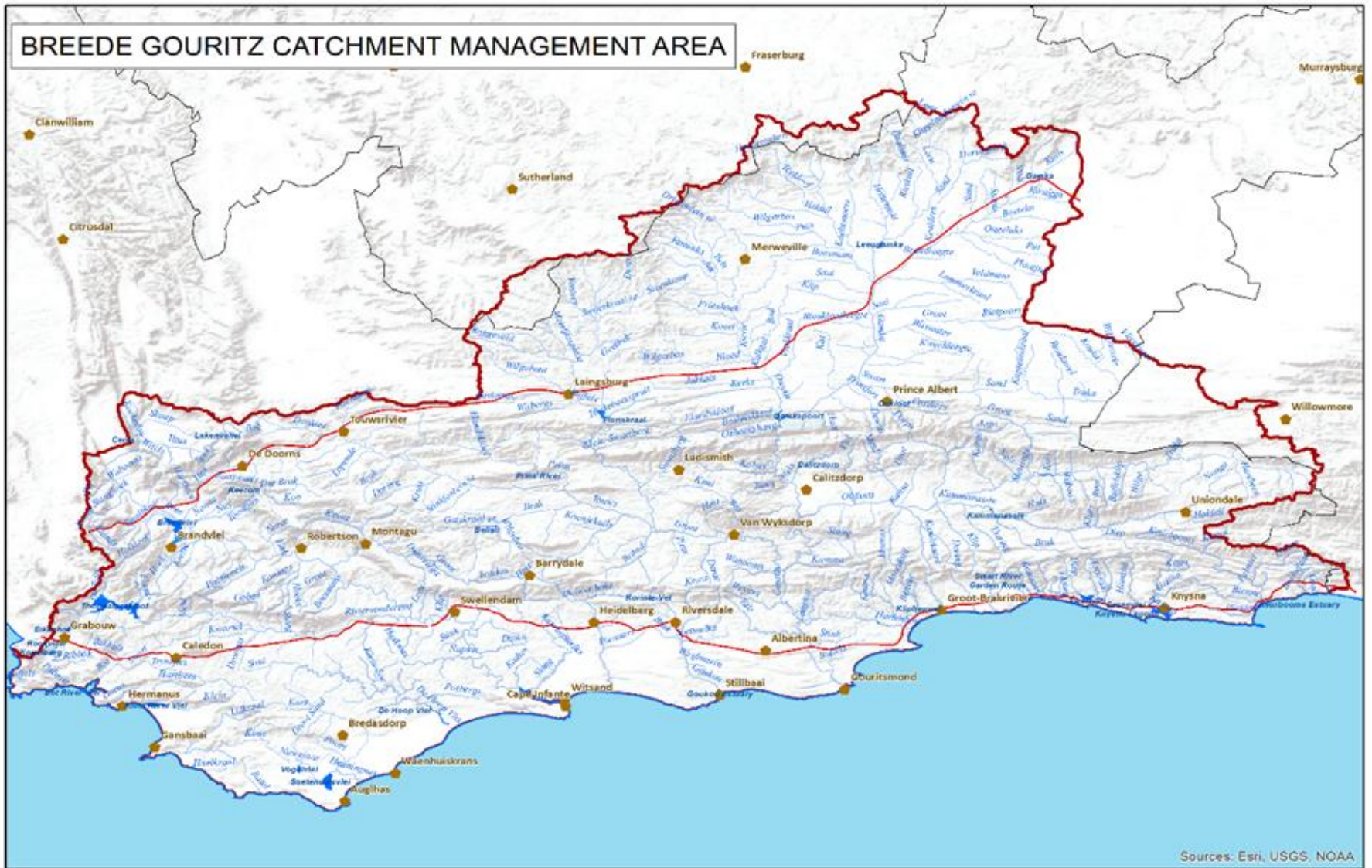


BREED-GOURITZ
CATCHMENT MANAGEMENT AGENCY

BACKGROUND

- Head Office – Worcester
- Satellite Office – George
- Number of personnel: 66
- Water Resource Management - NWA

BREEDE GOURITZ CATCHMENT MANAGEMENT AREA



Sources: Esri, USGS, NOAA

FUNCTIONS of the BGCMA

- Water Resources Planning
- Water Use Management
- Water Allocation Reform
- Water Resource Protection
- Alien Invasive Clearing and Rehabilitation
- Institutional Stakeholder Relations
- Strategic Support and Information systems

RSA NATIONAL WATER ACT VISION

- South Africa's National Water Act (NWA), Act 38 of 1998 has affirmed 3 principles of integrated water resource management namely social equity, environmental sustainability and economic efficiency.
- The Act recognises the need for the integrated management of all aspects of water resources and where appropriate, the delegation of management functions to a regional or catchment level so as to enable everyone to participate.

CATCHMENT MANAGEMENT FORUMS

- To enable the BGCMA to manage water resources in a sustainable, equitable and efficient manner, local water management is essential.
- The establishment of a catchment management forum can enhance the role of the BGCMA through/by:
 - Local catchment oversight, monitoring and reporting
 - Support in catchment management
 - Support the development of catchment management strategy and IDPs
 - Participate in integrated planning activities within local government, waste management, integrated environmental management and land development
 - Promote stakeholder participation in water resource management
 - Deal with specific issues

POSSIBLE ROLE OF CMFs

- Catchment management forums are organised in a participatory manner representing multi-lateral water related issues
- Participatory representation is critical for governance. The role-players can pool resources together in order to perform collective activities.
- CMFs may perform a wide range of functions.
 - Making recommendations on water use authorisation
 - Monitoring water resources and water use
 - Support WRM activities e.g. water quality monitoring, river health programmes etc.
 - Initiate water conservation/education outreach activities
- Non-WRM roles include:
 - Mobilise stakeholder collaboration in supporting local water-based development initiatives
 - Integrated environmental planning – waste management
- Watch-dog to strengthen compliance, monitoring and enforcement

THANK YOU