

ABI INFORMATION MANAGEMENT

Mapping
of
ABI Partners

Mapping
of
Alien Invasive

Mapping the ABI Partners

Footprint

Mapping the boundary or Footprint of our ABI Partners

Reach

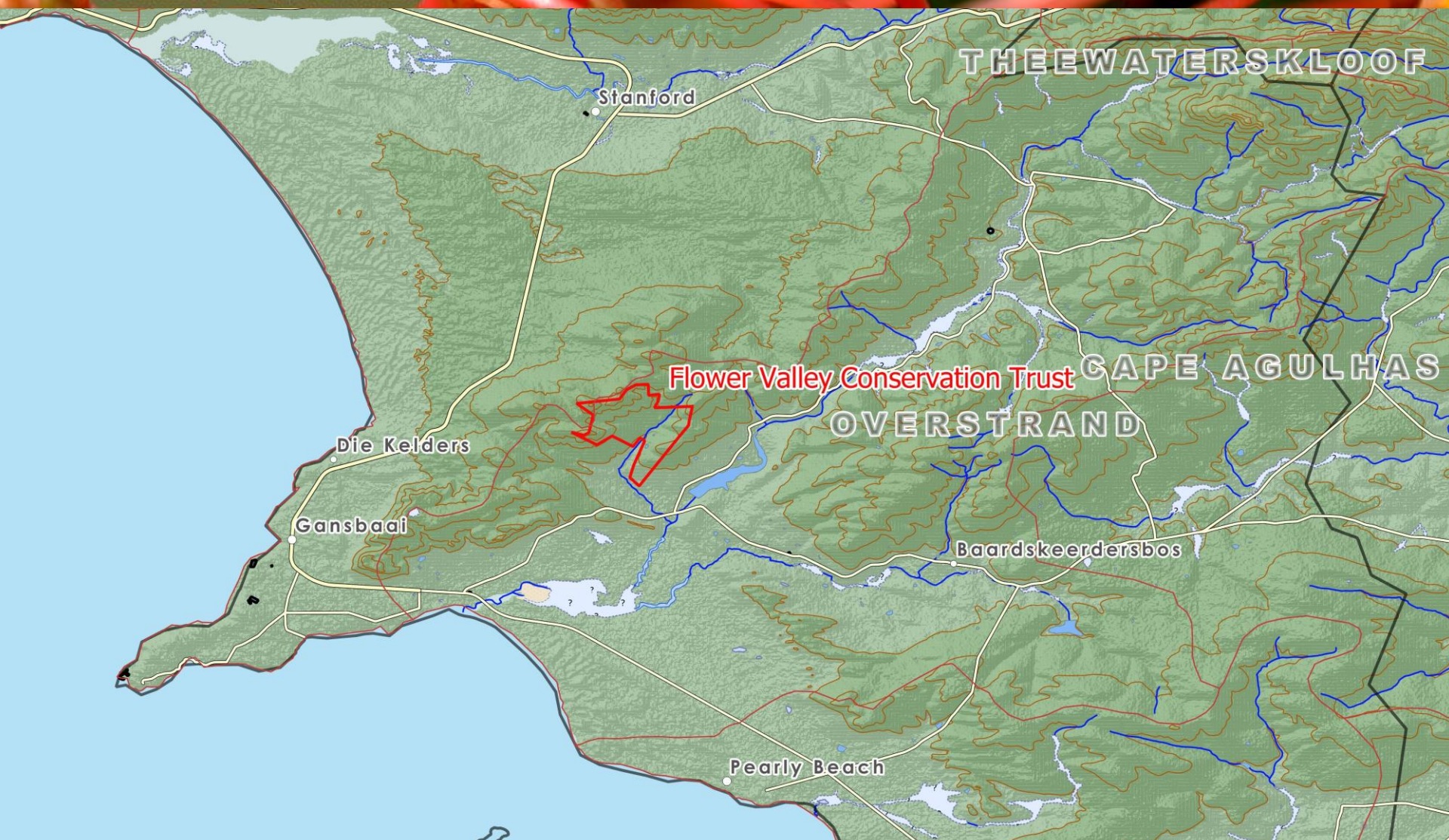
Mapping the projects and involvement of each partner in the ABI landscape

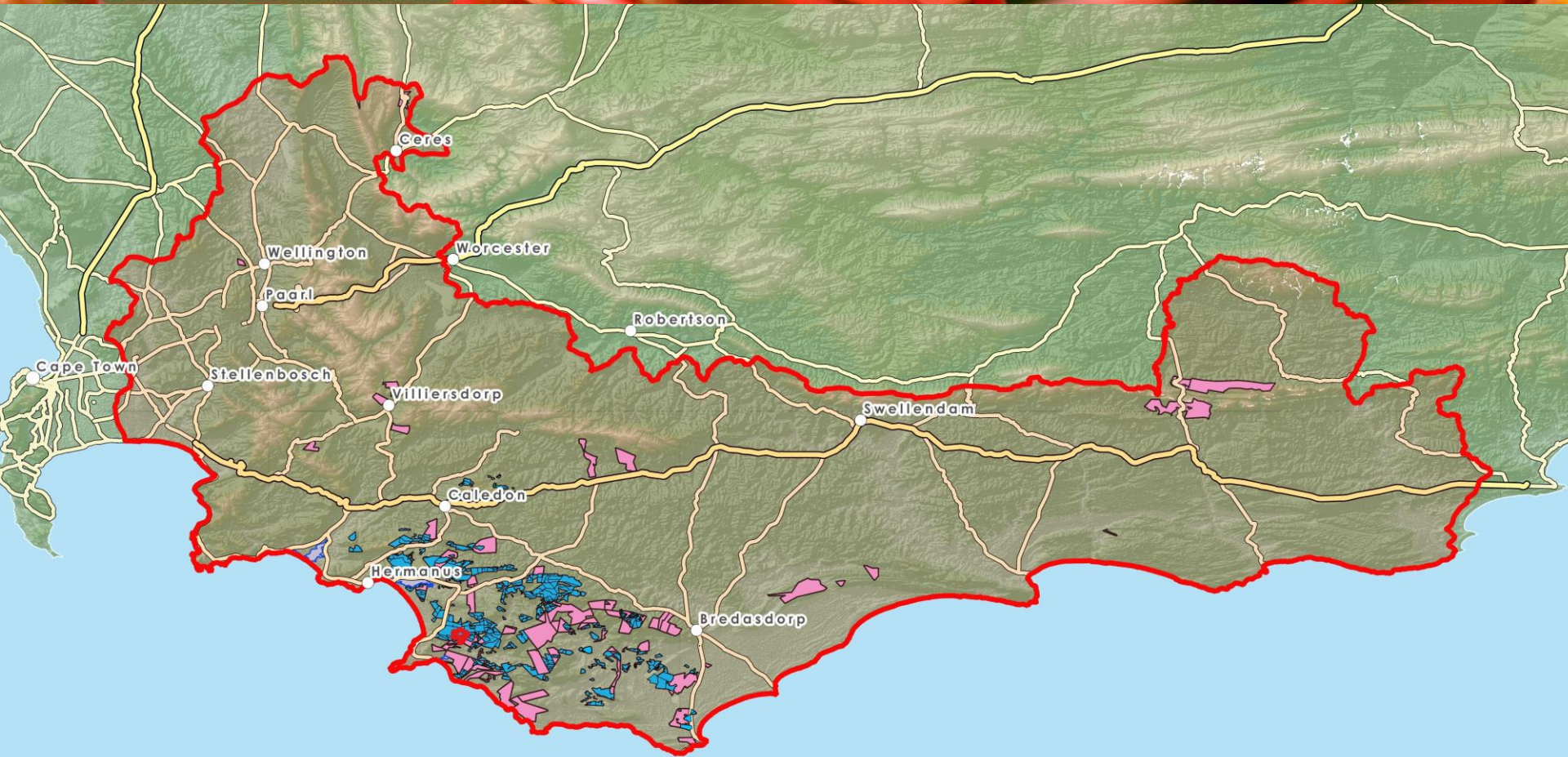
Project Information

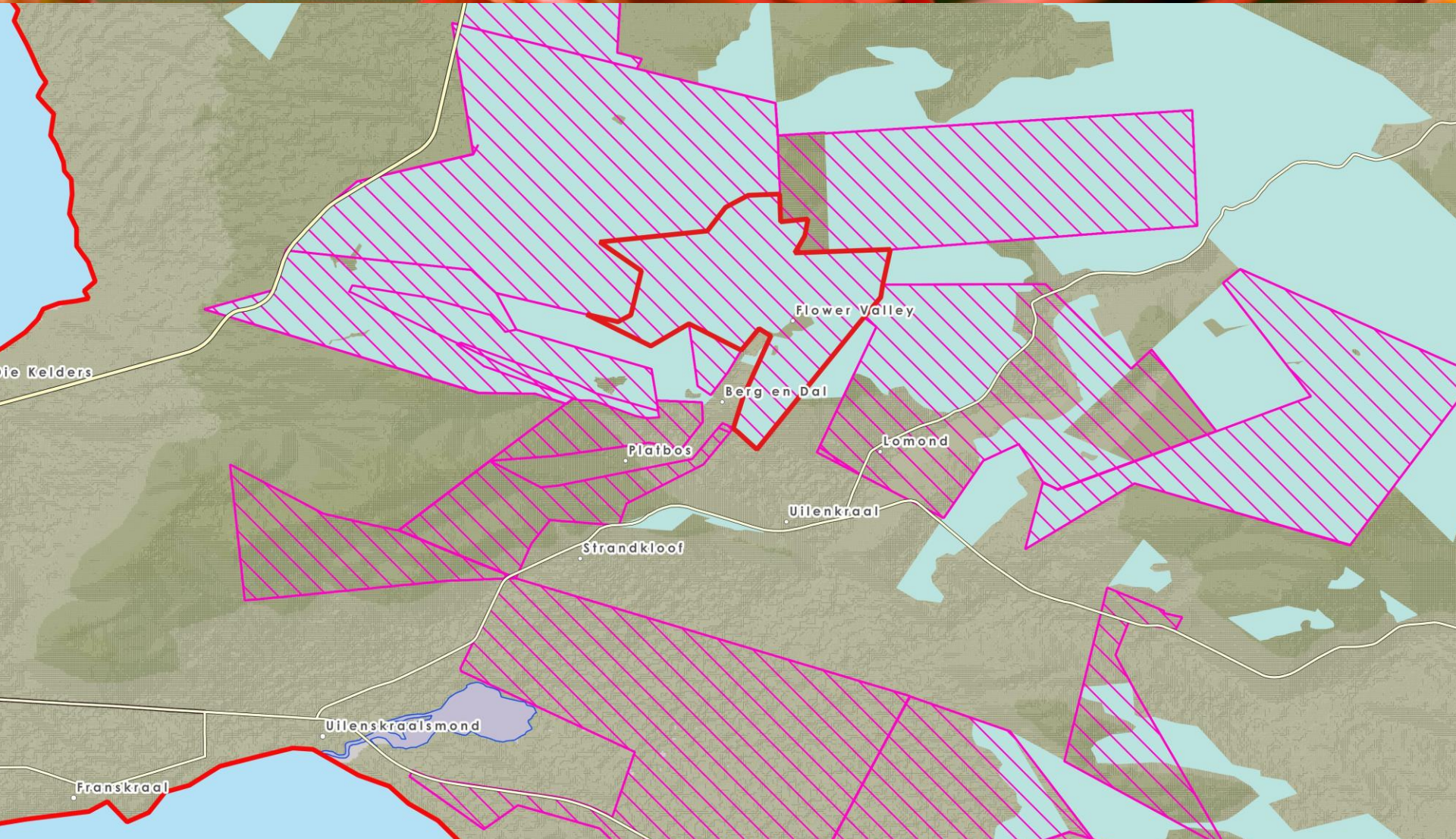
- Project Area
- Project Main Focus
- Investors

Why?

- Funding Applications
- Broad overview of investments within the Overberg







Project Focus

- Fire Management
- Alien Vegetation Management
- Freshwater management
- Conservation Management
- Biodiversity Stewardship
- Green Economy
- Capacity Building
- Responsible Tourism
- Contact Person
- Contact Details
- Investor/Investment
- Project Started
- Status
- Hectares
- People Capacitated

ABI / ABI partnership

- ABI/ABI partnership Data Agreement
- Create a Overberg Landscape Map of our efforts
- Providing a map for Funding Application

Biological Control

The need to map Bio-control has been identified by various land-users

Anybody with knowledge of historical sites where biological control has been:

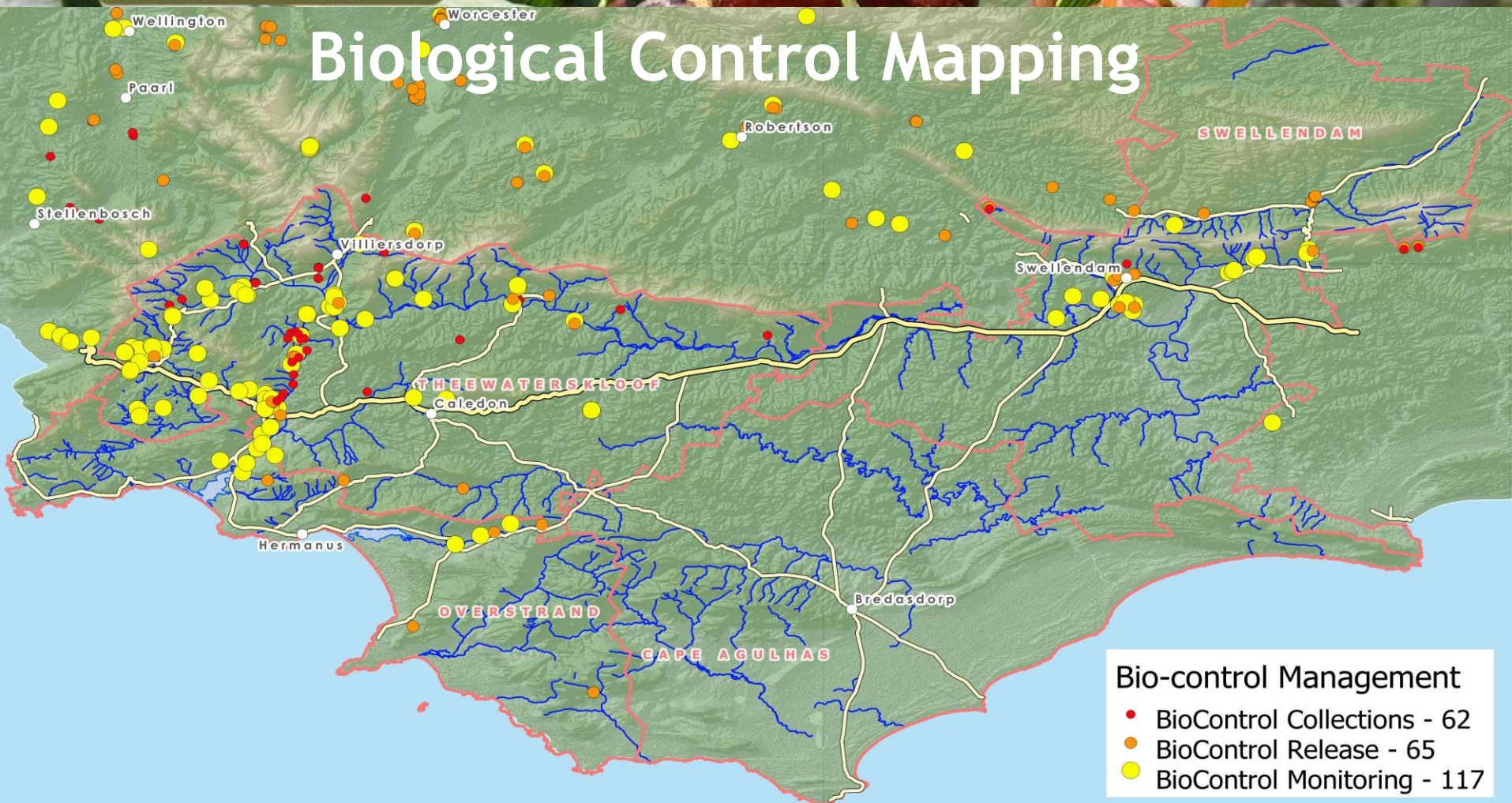
- Released
- Monitored
- Collected
- Want to release

Biological Control

Information Collected

- Target Species
- Bio-control released
- Number released
- Type of Agent
- Site/Location
- Date Released/Observed/Collected

Biological Control Mapping



Biological Control Mapping



▼ 2018-06 BioControl Collecti...	
▼ REGION	Overberg
▶ (Derived)	
▶ (Actions)	
REGION	Overberg
TARGET WEE	Acacia mearnsii
COMMON NAM	Blackwattle
BIOCONTROL	Dasineura rubiformis
NUMBER COL	4
Type of Ag	black bags of galls
SITE LOCAT	Botriver
GPS	-34,206400000000002
GPS_1	19,148900000000001
DATE RELEA	July 2016



ABI Partners:

Mapping the **footprint** of ABI Partners

Mapping of **reach** of our Partners

- Fire Management
- Alien Vegetation Management
- Freshwater management
- Conservation Management
- Biodiversity Stewardship
- Green Economy
- Capacity Building
- Responsible Tourism

Alien Invasives:

Map the **Alien Clearing efforts**

Map the **Biocontrol** in the Overberg

- Release
- Monitor
- Collection

Please provide us with your
contact details if you are
interested.