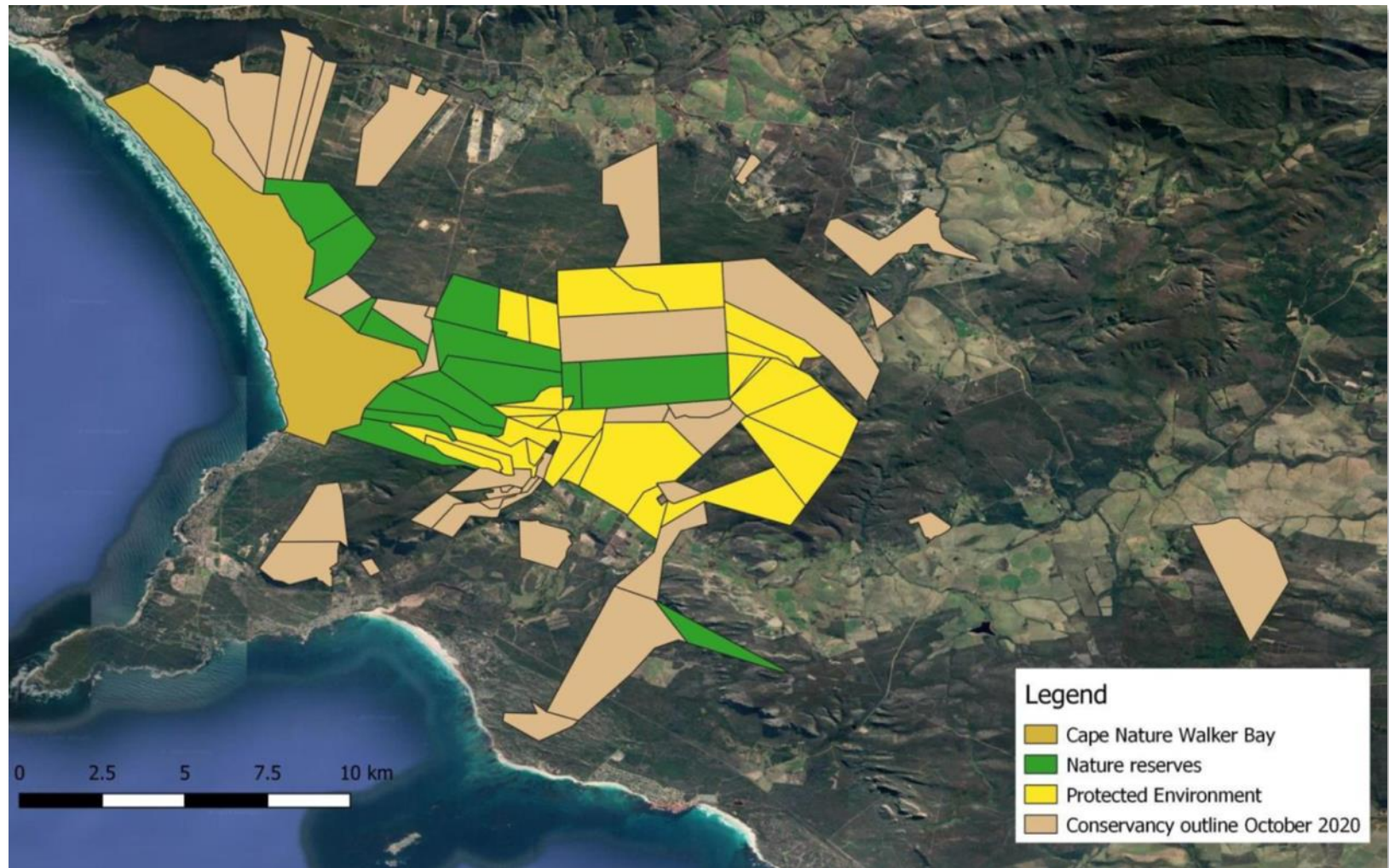


GROOTBOS FOUNDATION



SEAN PRIVETT
10 NOVEMBER 2020

ESTABLISHING WALKER BAY PROTECTED AREA NETWORK



RESEARCH HUB



LANDSCAPE LEVEL RESEARCH



BIODIVERSITY STEWARDSHIP





OVERBERG DISTRICT MUNICIPALITY



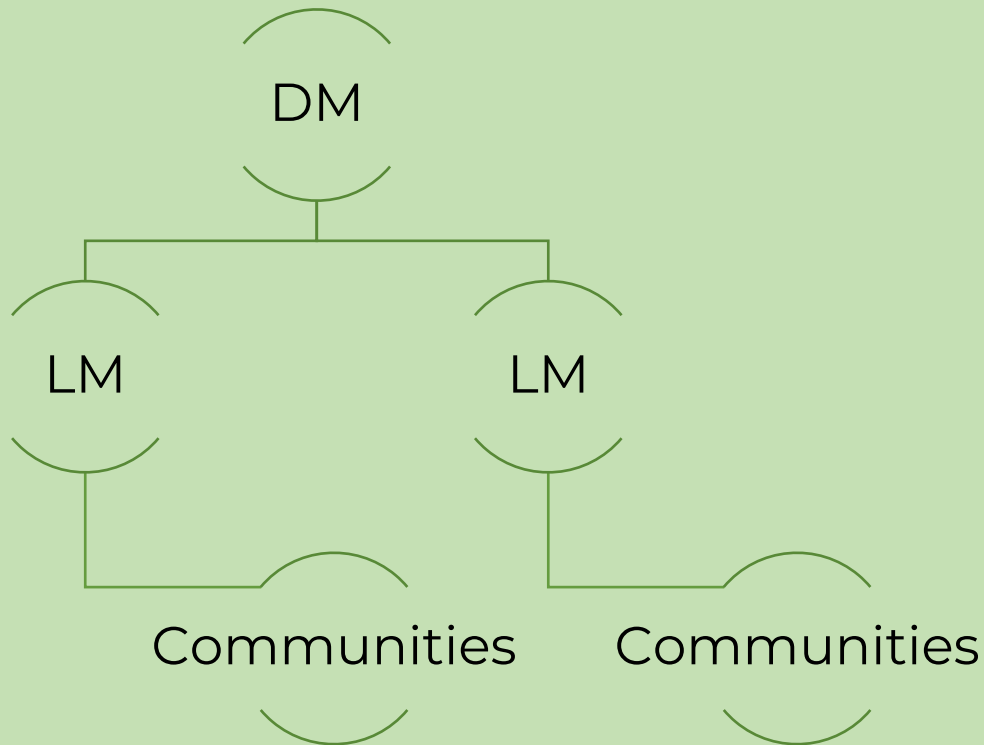
abi

IMPROVE LANDSCAPES
CONNECT COMMUNITIES

RULIEN VOLSCHENK
10 NOVEMBER 2020

ROLE AND FUNCTION OF THE DISTRICT MUNICIPALITY

Local Government Structure



Co-ordination function

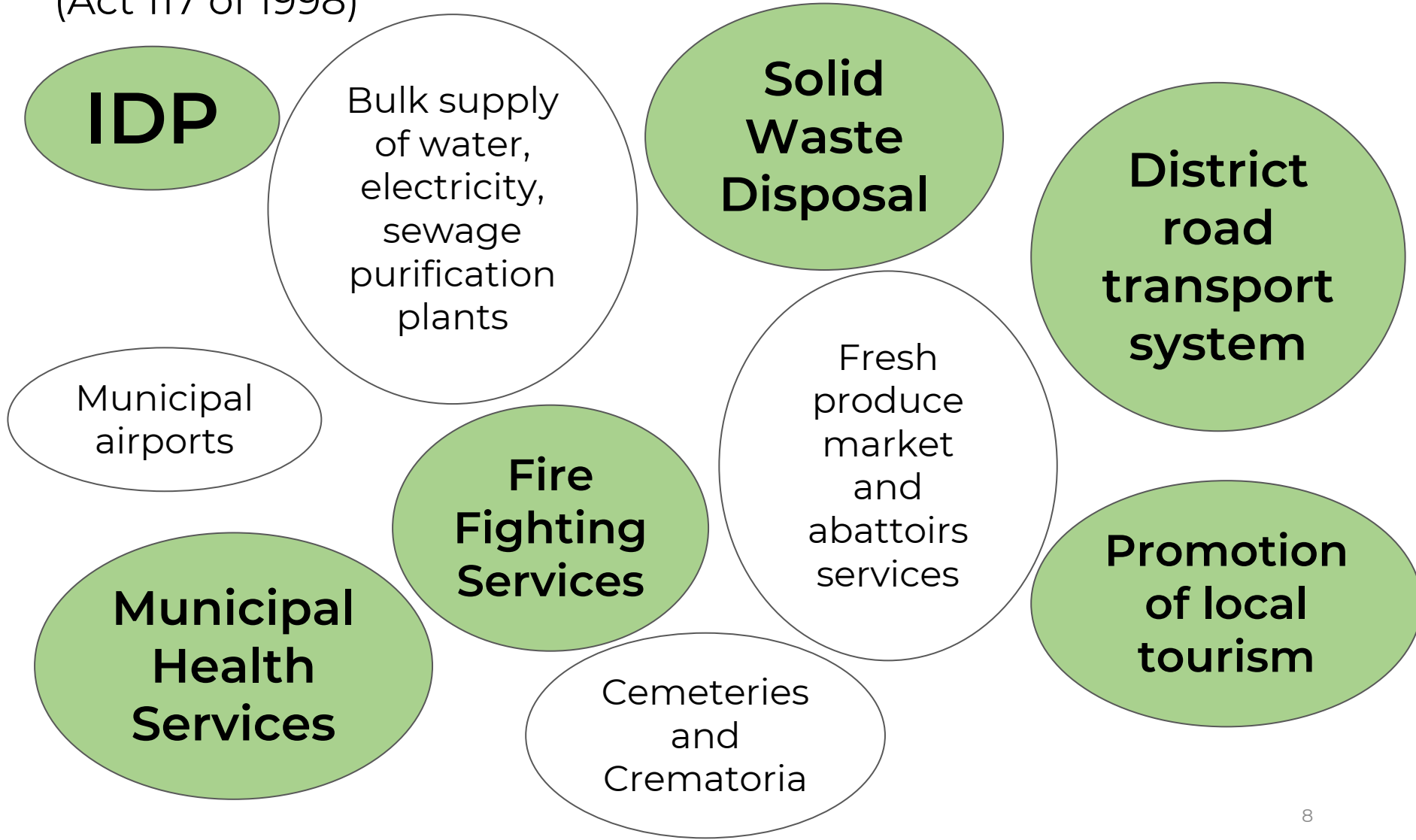
Joint district planning

Integrated Governmental Relation

Economic development

ODM FUNCTIONS & POWERS

Reference: Section 84 of the Municipal Structures Act of 1998
(Act 117 of 1998)



Strategic Focus areas

- ODM Priority
 - 1) Economic recovery
 - Job
 - Safety and Security
 - Dignity and Wellbeing

- Environmental Management Service Priority Areas
 - 1) Waste Management
 - Regionalisation of waste management services
 - Municipal waste infrastructure
 - Organic waste diversion
 - 2) Climate Change Response
 - Mainstreaming climate change planning
 - Accessing climate funding
 - 3) Biodiversity Conservation
 - Mainstream biodiversity into municipal planning
 - Invasive alien species management

WHERE DOES THE ODM/ABI PARTNERSHIP FIT?

1. Collaboration for common GOALS
2. The BIG boundary
3. Improved communication



CAPENATURE Overberg Landscape



abi

IMPROVE LANDSCAPES
CONNECT COMMUNITIES

JOHAN BURGER
10 NOVEMBER 2020

ABI - CapeNature alignment

CapeNature Strategic goals

"Conserving nature for resilience and sustainability."



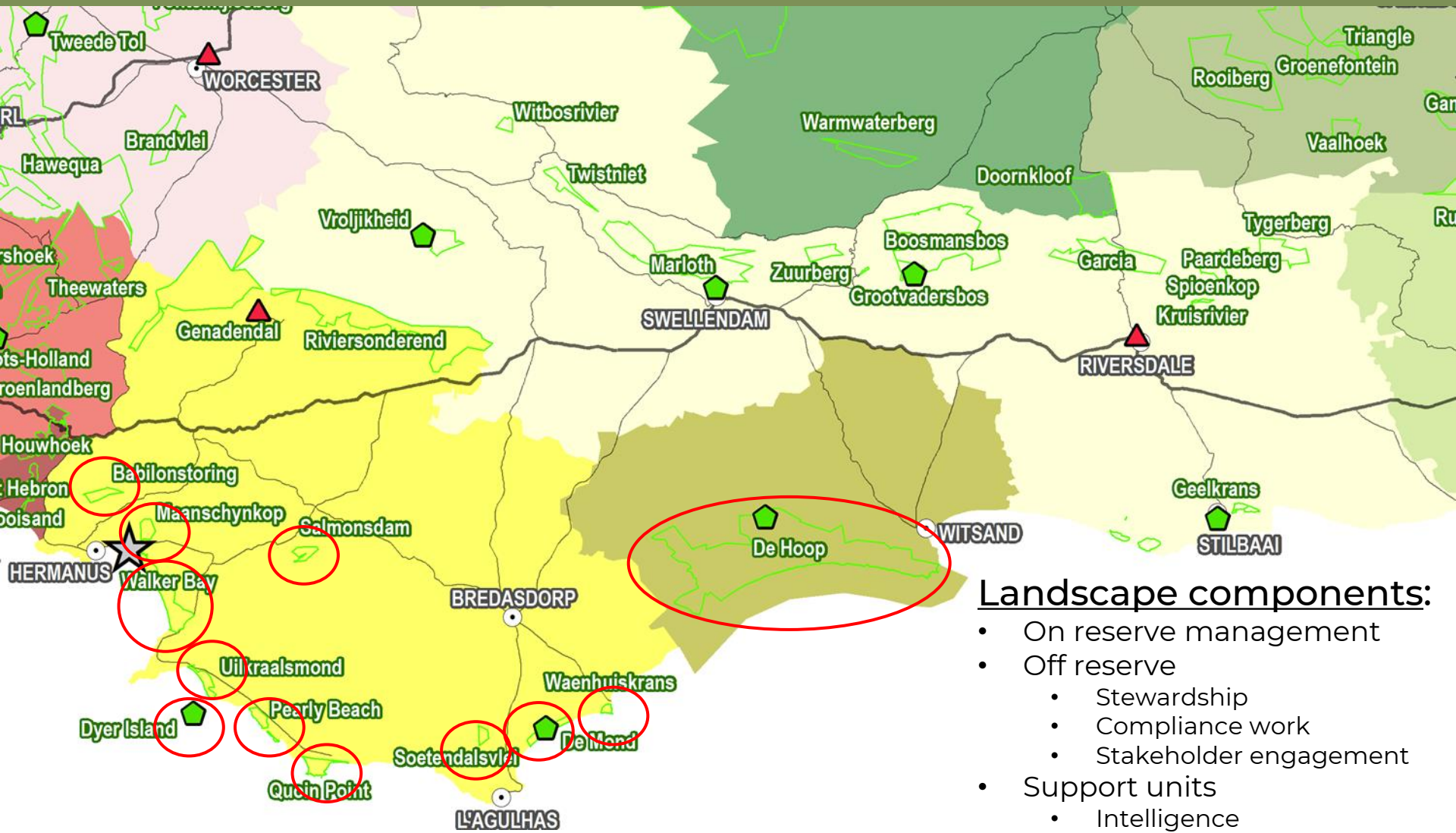
Primary ABI

Objective:

"Foster biodiversity through sustainable and integrated socio-cultural-, economic and environmental development in the Overberg."

1. Green Economy
2. Land-use planning
3. Responsible tourism
4. Environmental Education

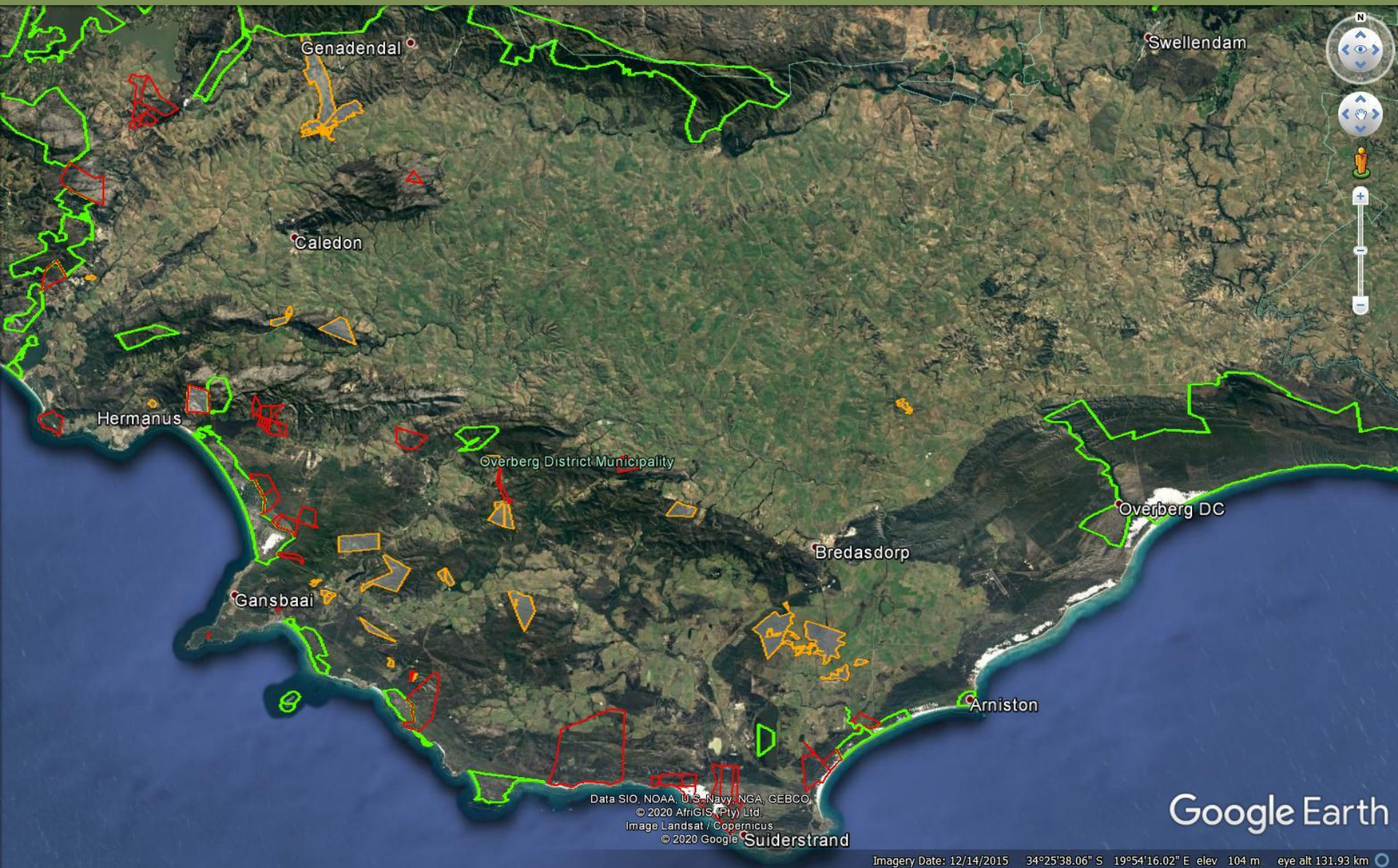
CapeNature Landscape Overview



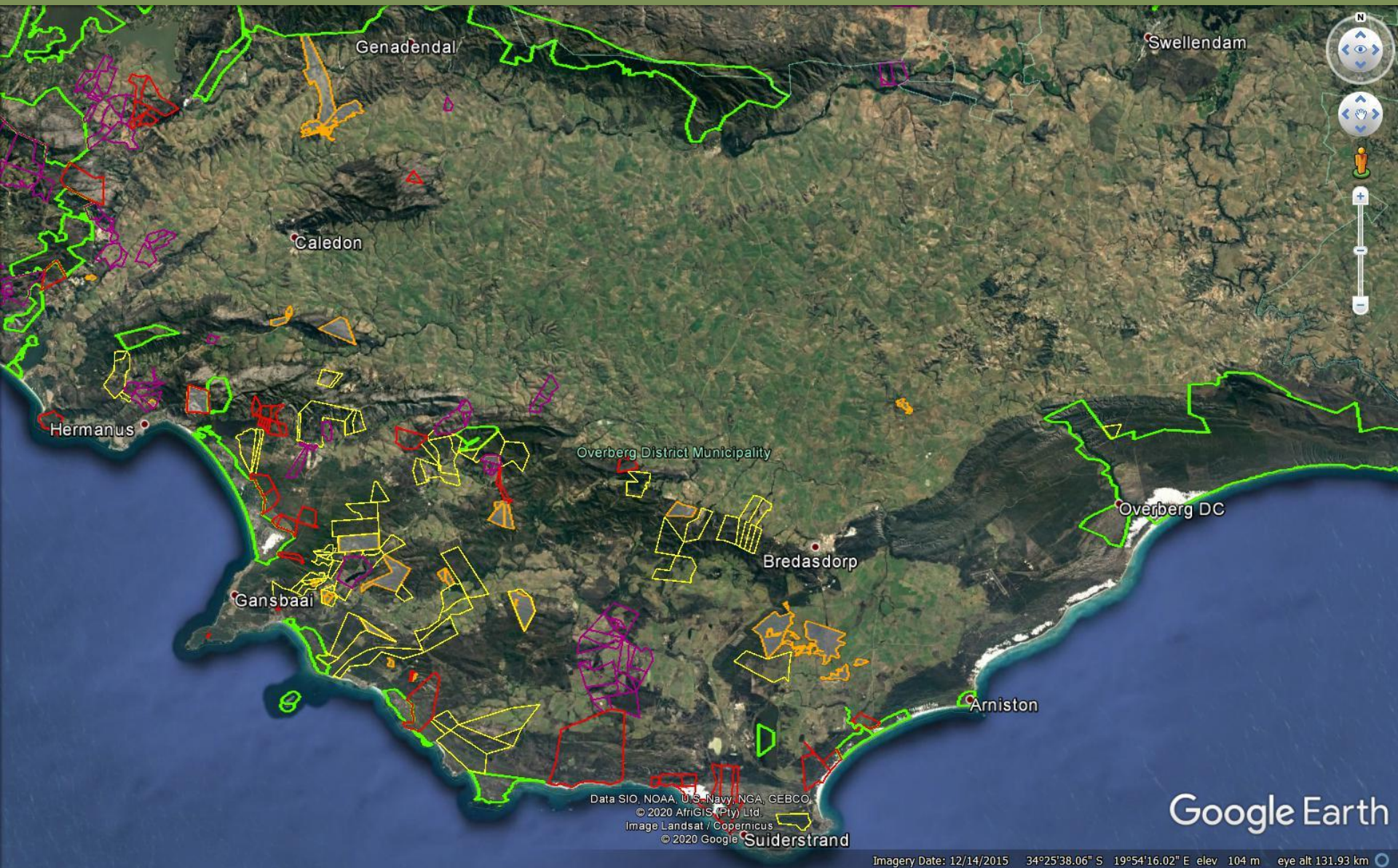
Landscape components:

- On reserve management
- Off reserve
 - Stewardship
 - Compliance work
 - Stakeholder engagement
- Support units
 - Intelligence
 - Marine/coastal
 - Catchment/fire
 - Tourism/Access

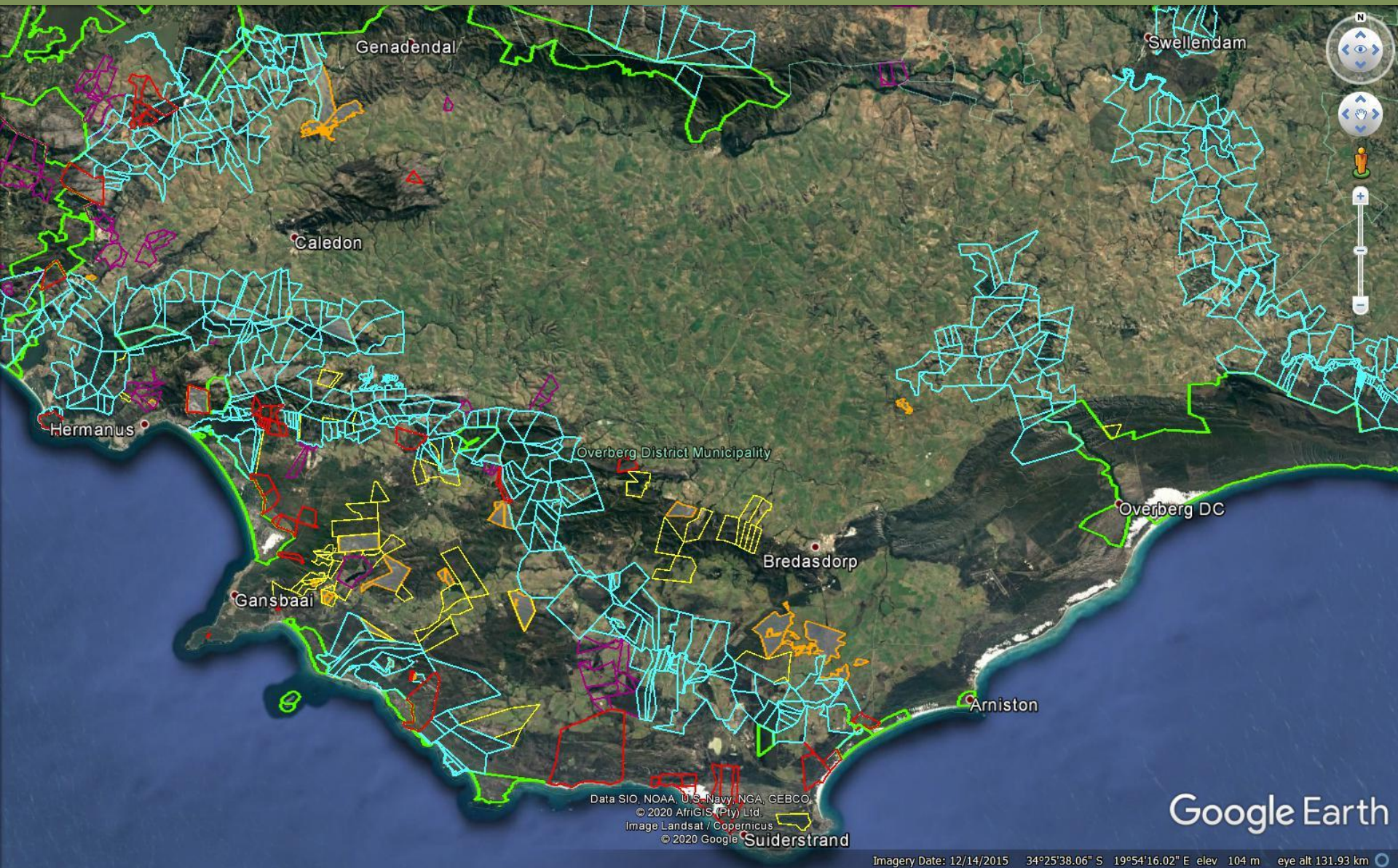
Landscape approach – Stewardship, PNR's



Landscape approach – BBI's



Landscape approach – corridors (climate)



Landscape approach - CapeNature/ABI partners

1. Conservation planning tool available – WC Biodiversity spatial plan (CBA's)
2. Stewardship methodology – NGO/partner implementation
3. Integrated land-use planning tools – EMF, land-use plans, farm plans
4. Biodiversity and Business initiatives – sustainable farming practises
5. New conservation on private land methodology developed
6. Partnerships make it happen – capacity constraints



A close-up photograph of a purple flower, likely a cornflower, with many small, light purple petals and prominent, darker purple stamens. The background is a soft, out-of-focus green.

FLOWER VALLEY CONSERVATION TRUST

The ABI logo features a stylized green leaf graphic to the left of the lowercase letters 'abi' in a white, sans-serif font, all contained within a yellow rectangular box.

abi

IMPROVE LANDSCAPES
CONNECT COMMUNITIES

ROGER BAILEY
10 NOVEMBER 2020

FLOWER VALLEY CONSERVATION TRUST: Focus areas

EARLY CHILDHOOD DEVELOPMENT PROGRAMME

1. Home Based support (0-4 yrs).
2. Centre Based support
3. Outdoor Learning Classroom



INVASIVE ALIEN CLEARING PROGRAMME

1. Natural Resource Management
2. Service to land owners and contracting teams
3. Advocacy through collaboration



SUSTAINABLE HARVESTING PROGRAMME

1. Assurance of good practice
2. Service that enables ethical practice.
3. Advocacy within the supply chain

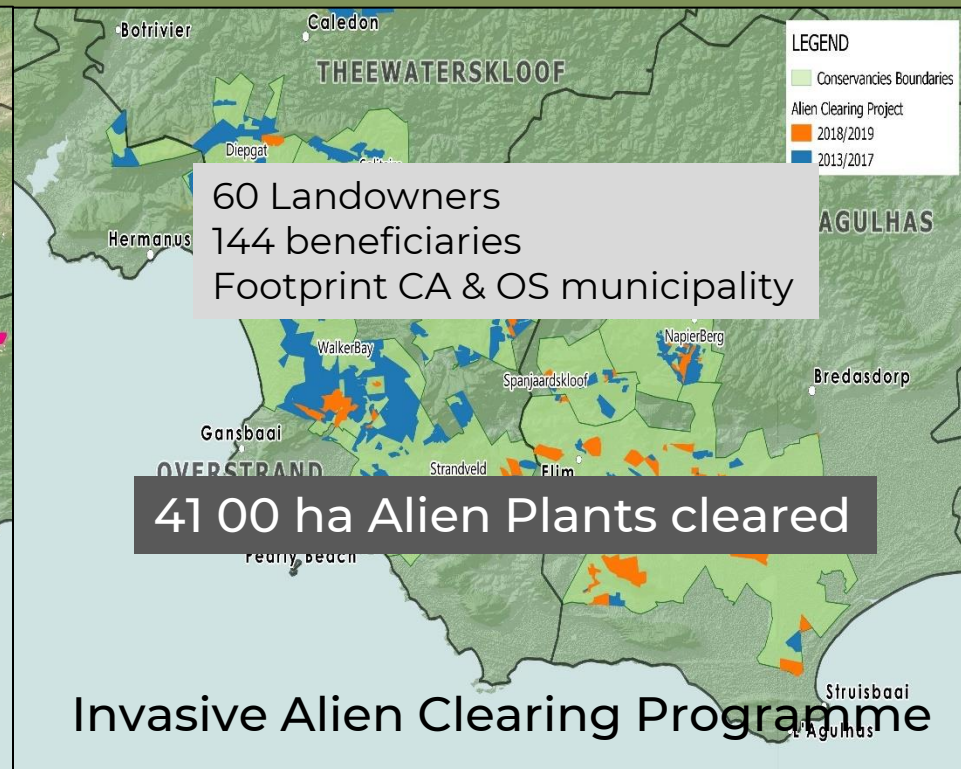
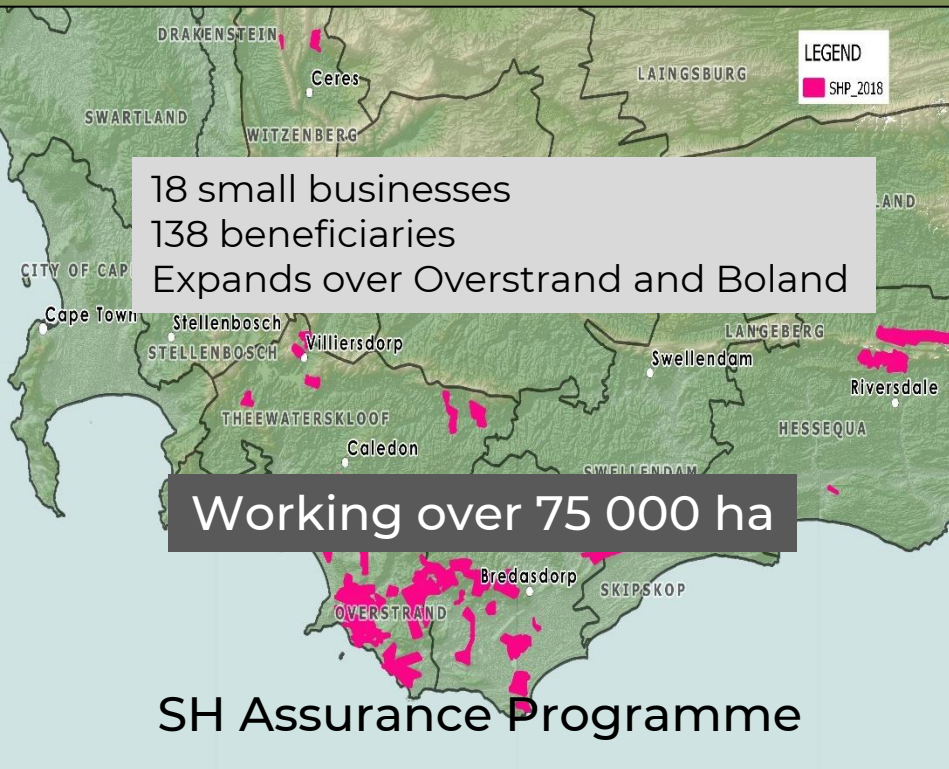


FLOWER VALLEY FARM

1. Hiking trails
2. Accommodation
3. Space for learning and engagement



FLOWER VALLEY'S IMPACTS (2012-2019)



OUR HOME: FLOWER VALLEY FARM



540 ha of pristine fynbos (410 plant species)

Centre of all Trust's activities

Learning center that builds resilience for children and nature





THE NUWEJAARS WETLANDS SMA

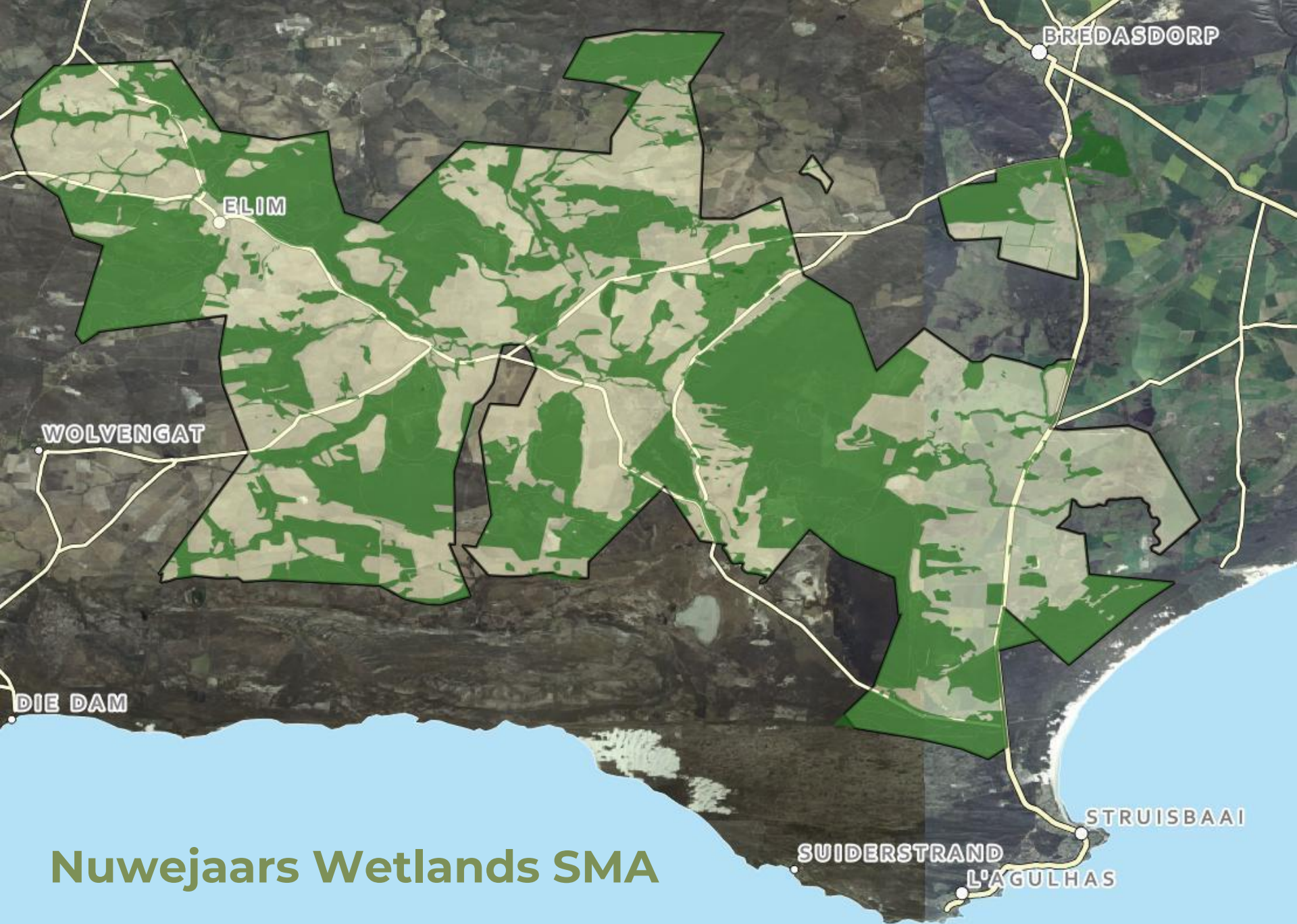


abi

IMPROVE LANDSCAPES
CONNECT COMMUNITIES

EUGENE HAHNDIEK
10 NOVEMBER 2020





Nuwejaars Wetlands SMA

Planning and networking:



FYNBOS
FORUM


Alien clearing:



Controlled ecological burns

Our fire management plan aims at creating a mosaic pattern of veld ages across the NWSMA, to not only improve veld condition but also to manage potential runaway fires by creating strategic firebreaks. This reduces the susceptibility of large tracts of land burning uncontrollably. The fire management plan sets out natural vegetation blocks of strategic importance to be burnt in a rotation of about 18 years.



A close-up photograph of a vibrant red Protea flower, showing its intricate, layered petals and central stamens. The flower is the central focus, with a blurred background of similar flowers and green foliage. The lighting is soft, highlighting the texture of the petals.

FYNBOS TRUST CONTRIBUTING TO THE ABI VISION

The ABI logo features a stylized, dark green silhouette of a Protea flower on the left. To its right, the letters 'abi' are written in a bold, white, lowercase sans-serif font. The logo is set against a solid olive green rectangular background.

abi

**IMPROVE LANDSCAPES
CONNECT COMMUNITIES**

CHRIS MARTENS
10 NOVEMBER 2020

FYNBOS TRUST (Contributing to the ABI Vision)

FYNBOS TRUST (Est 2016)

PROMOTES AND SUPPORTS LANDSCAPE SCALE CONSERVATION THROUGH:

- Conservation Leadership , innovation and technical support
- Partnerships (collaboration and support)
- Strategic and catalytic small grant funding



OBJECTIVES (amongst others)

- Establish and manage PAs & Connectivity (NBSAP /WCBSAP)
- Effective management of our own Reserves(3500ha)
- Facilitate and guide establishment of others
- Provide support to development of PA management plans



FYNBOS TRUST

Contributing to the ABI Vision

Objectives

- Provide Technical Support to existing initiatives where this adds value (ORCT, Grootbos Foundation, NW SMA, KSB Cons, NMC & FPA)
- Support ECD and EE programs (FVCT & HHS Env Leadership Program)
- Promote and support Integrated Fire and IAP management
- Support Green Economy w.r.t Use of IAP Biomass with a conservation outcome



FYNBOS TRUST

Contributing to the ABI Vision

Key ABI Themes supported:

- Land use Planning

- 50% my time and R 3 million 2017-2020
- MoAs with FVCT, Grootbos Foundation, ORCT ,NW SMA, KSB Conservancy
- Subsidised labour for AIP management around PAs (approx. 400ha per/annum)
- Facilitate Knowledge Exchange for Extension and Landscape conservation practitioners

- Environmental Education

- ECD support (R1,6 million 2017-2020)
- Environmental Leadership (R180k 2017-2019)

- Green Economy

- Seed funding and Capital Investment Biochar from IAPs for Conservation outcome
- (R 2.5 Mil -Factory, Vehicle, chipper, misc equipment)



ABI is on the planning threshold for 2021 -2030 and we are looking forward to a ratcheting up of interventions all with prosperity, sustainability and conservation outcomes.





OVERBERG DISTRICT MUNICIPALITY LED/TOURISM COORDINATOR



abi

IMPROVE LANDSCAPES
CONNECT COMMUNITIES

REGINA MENTOOR
10 NOVEMBER 2020





LED & TOURISM



District Economic Recovery Plan

In collaboration with Overberg Local Municipalities, The District Economic Recovery Plan is currently being finalised – will be presented at the next DCFTech for submission to SALGA and Province on 30 November 2020.

Focus of the District Economic Recovery Plan

TOP PRIORITIES:

- Jobs
- Safety
- Dignity and Well-Being



LED & TOURISM

Overberg Initiatives

Long Term	
Eco Tourism	To build cultural and environment awareness and to minimise the impact of tourism on the environment and to create employment opportunities for the local people.
Agri-Tourism	To grow the touring of agricultural areas in the Overberg
Short Term	
Support Local Tourism Organizations	To act as a link between businesses and municipality and alignment with health protocols.
Maximise events hosting for tourism development	Attract more sustainable events
Destination Connect	No Boundary approach to tourism ensuring a coordinated and seamless exploration of the District with a view of increasing the number of bed nights spent in the region.

LED & TOURISM

- **World Responsible Tourism Award 2020**

Grootbos Foundation are amongst those who took responsibility in the year of C19 and sought to help others cope in the pandemic

- **WOMAN in Green**

Webinar 17 November 2020

The event aims to highlight the activities of women in the green economy and help participants derive insights into how they can introduce green economy and circular solutions into their business operations.

- **Film Industry**

Film makers are looking for fresh and safe locations or inspiration and the Cape Overberg is more ready than ever to facilitate small to large film crews of any size, our wide open spaces and secluded locations, means safety comes much easier than in metropolitan areas.



Thank you

