

# Water Security for the Overberg



ABI in the Overberg  
Partners Meeting  
15 May 2019





# GCTWF | Demand is Predicted to Outstrip Water Supply by 2021







# GREATER CAPE TOWN WATER FUND BUSINESS CASE:

Assessing the Return on Investment for Ecological Infrastructure Restoration



# GCTWF – Public & Private Partnership



LEVI STRAUSS & CO.

## STEERING COMMITTEE



## PUBLIC PARTNERS



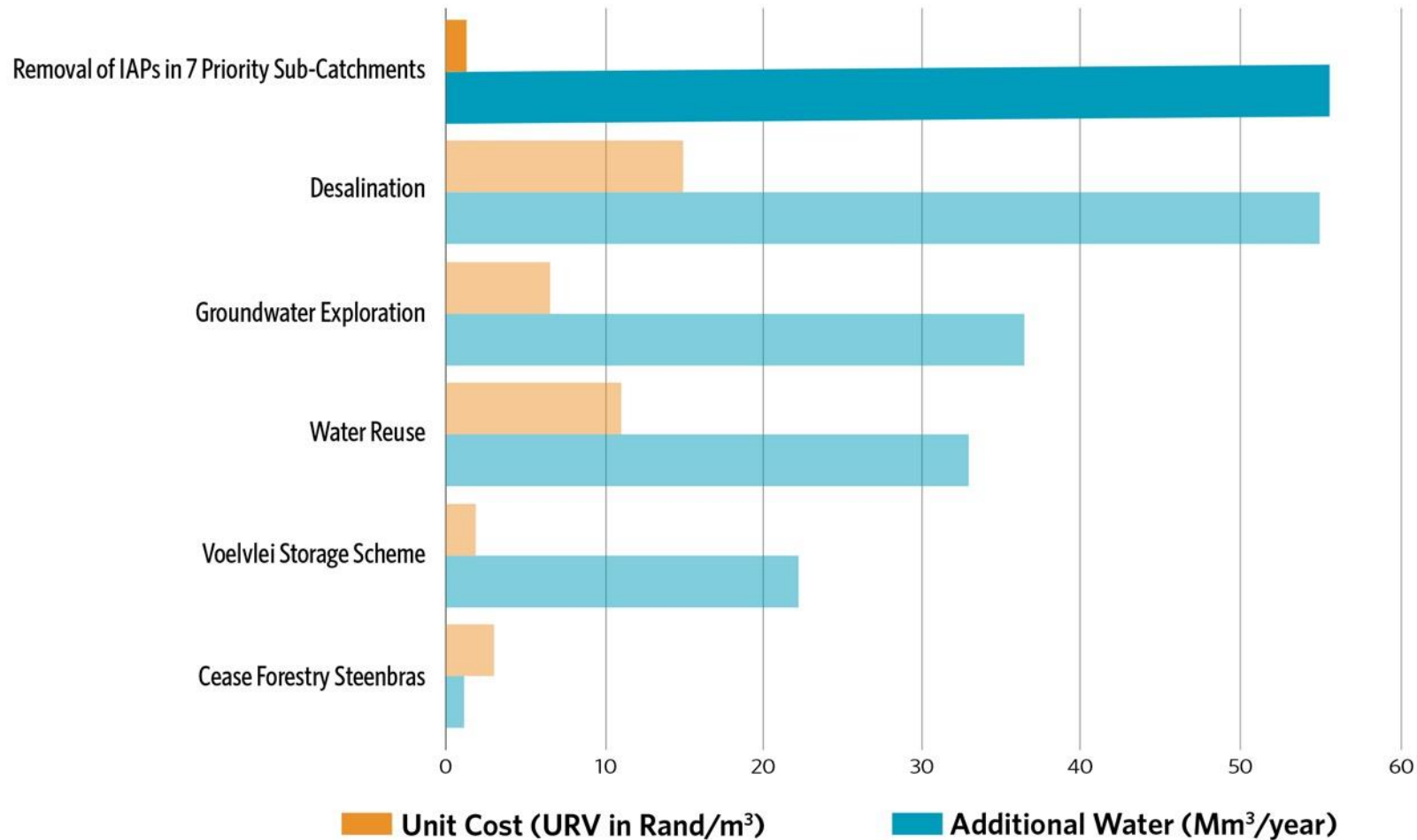


# GCTWF | **Two-Thirds of Sub-Catchments are Invaded by Alien Plants**

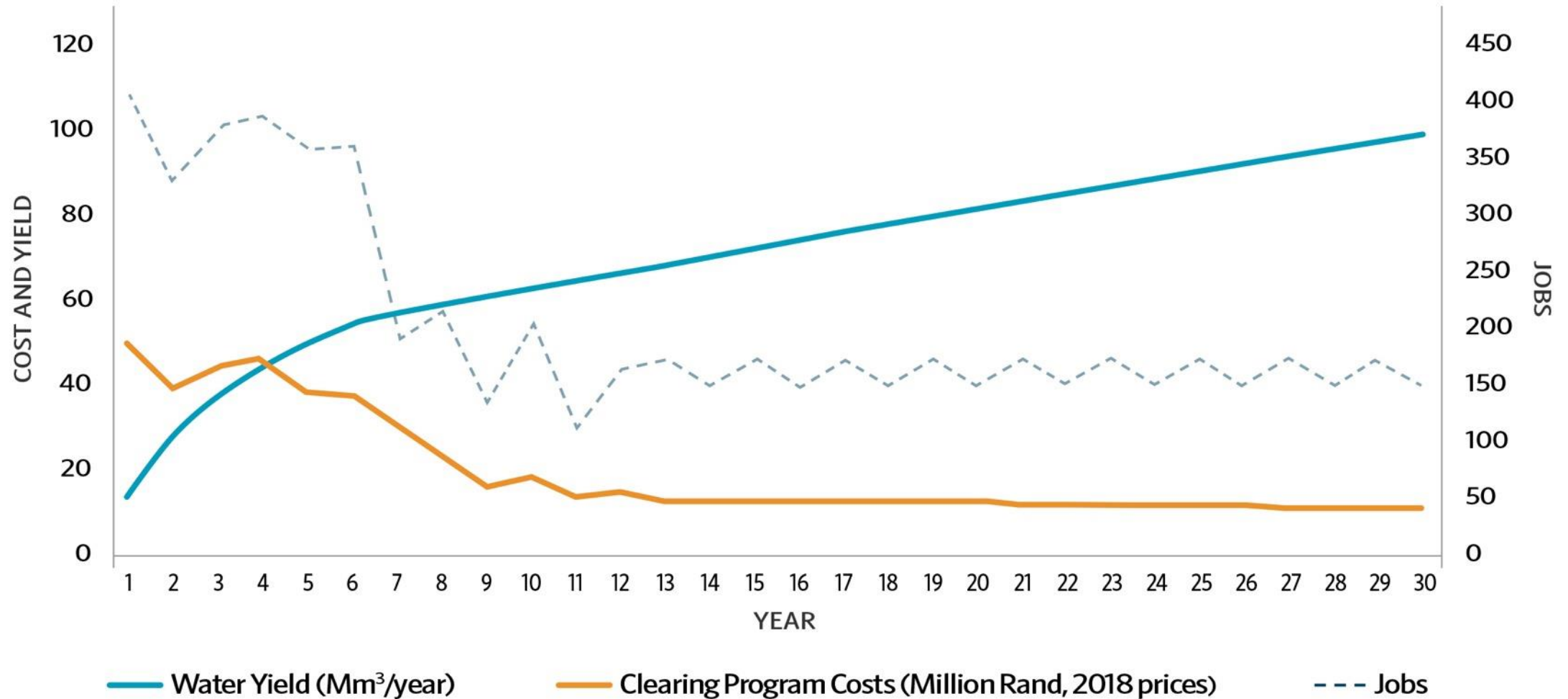




### **CATCHMENT RESTORATION INCREASES WATER SUPPLY AT THE LOWEST UNIT COST**



## TIMELINE OF ANNUAL COSTS, WATER YIELD BENEFITS, AND JOBS CREATED

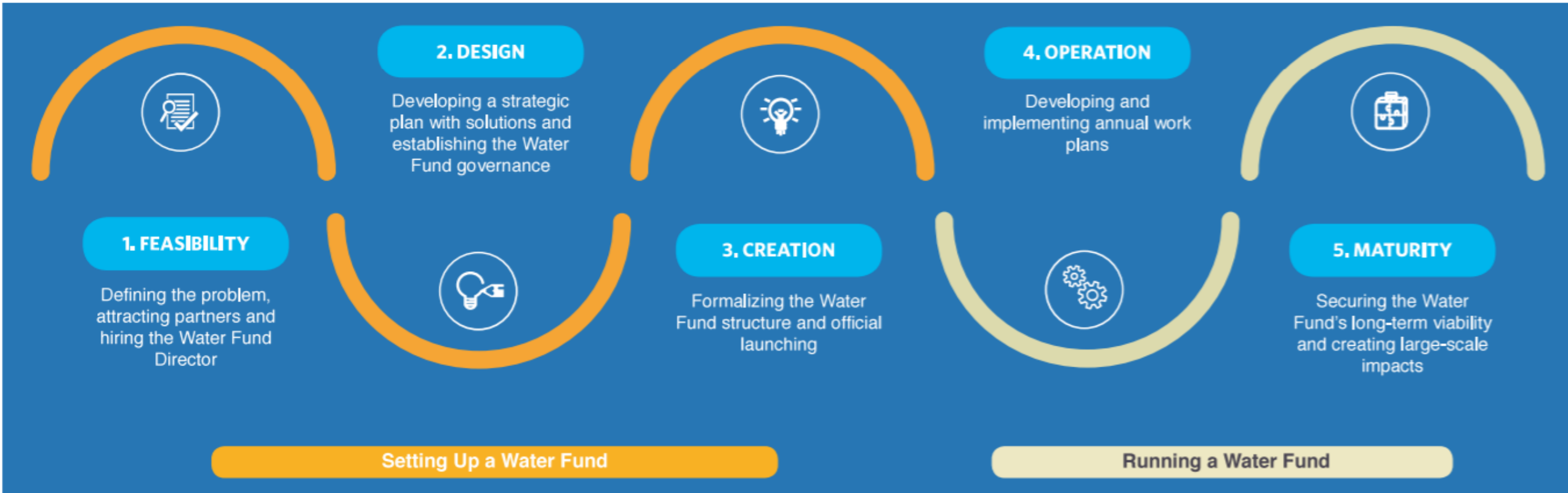








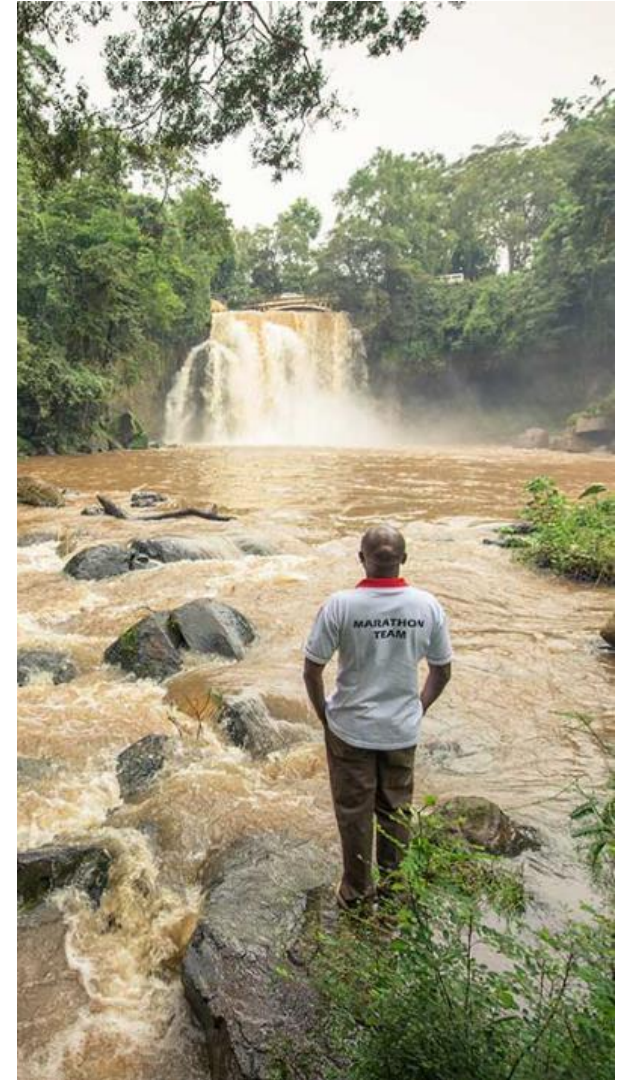
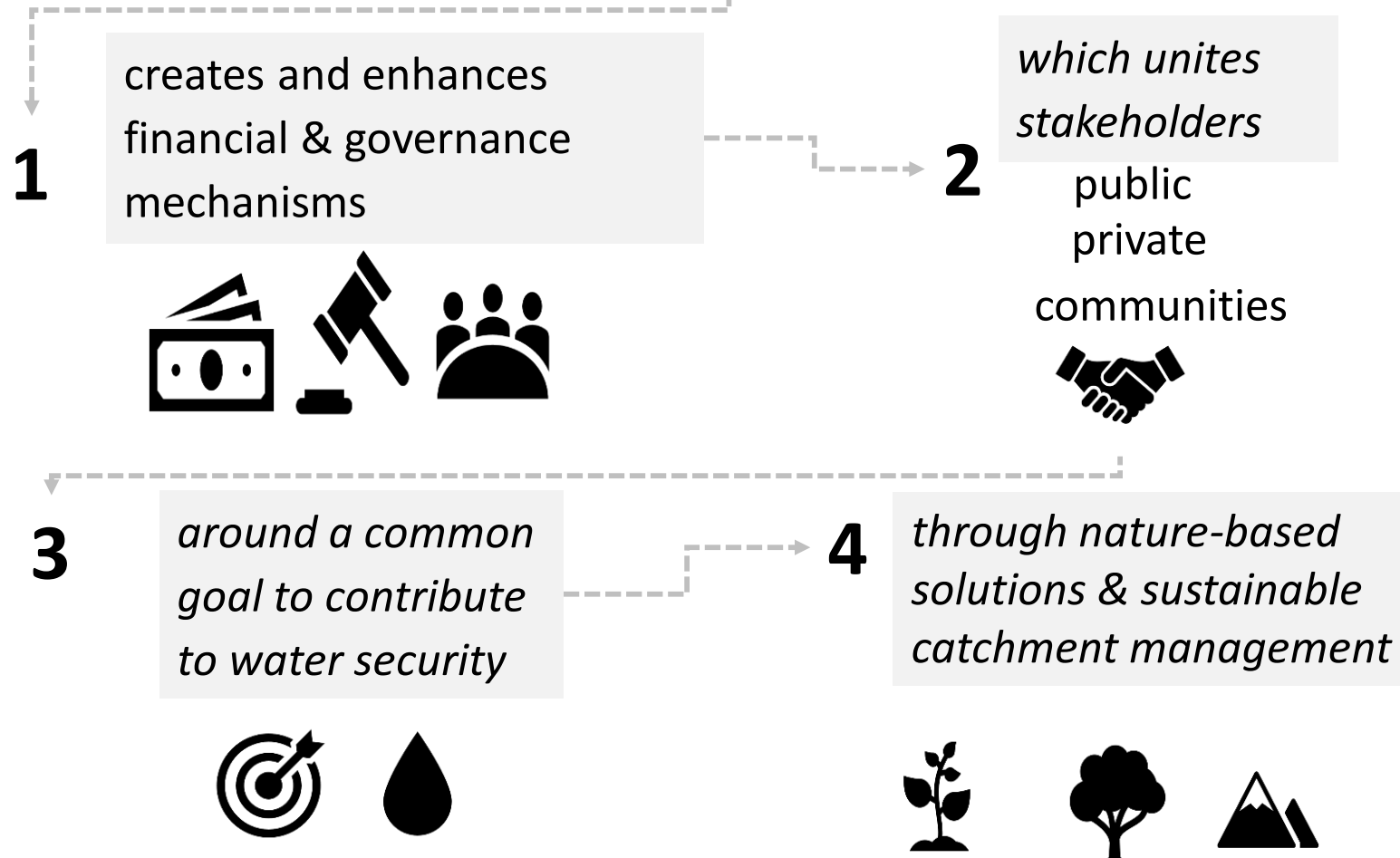
# Water Fund Life Cycle





# WATER FUND | What is a Water Fund?

A Water Fund is an organizations that:





# WATER FUND | What it is not



**water & sanitation**

Department:  
Water and Sanitation  
REPUBLIC OF SOUTH AFRICA



- Mandates
- Duplicate
- Compete



**environmental affairs**

Department:  
Environmental Affairs  
REPUBLIC OF SOUTH AFRICA



Western Cape  
Government

BETTER TOGETHER.



- Catalytic
- Capacity Building
- Networking
- Support

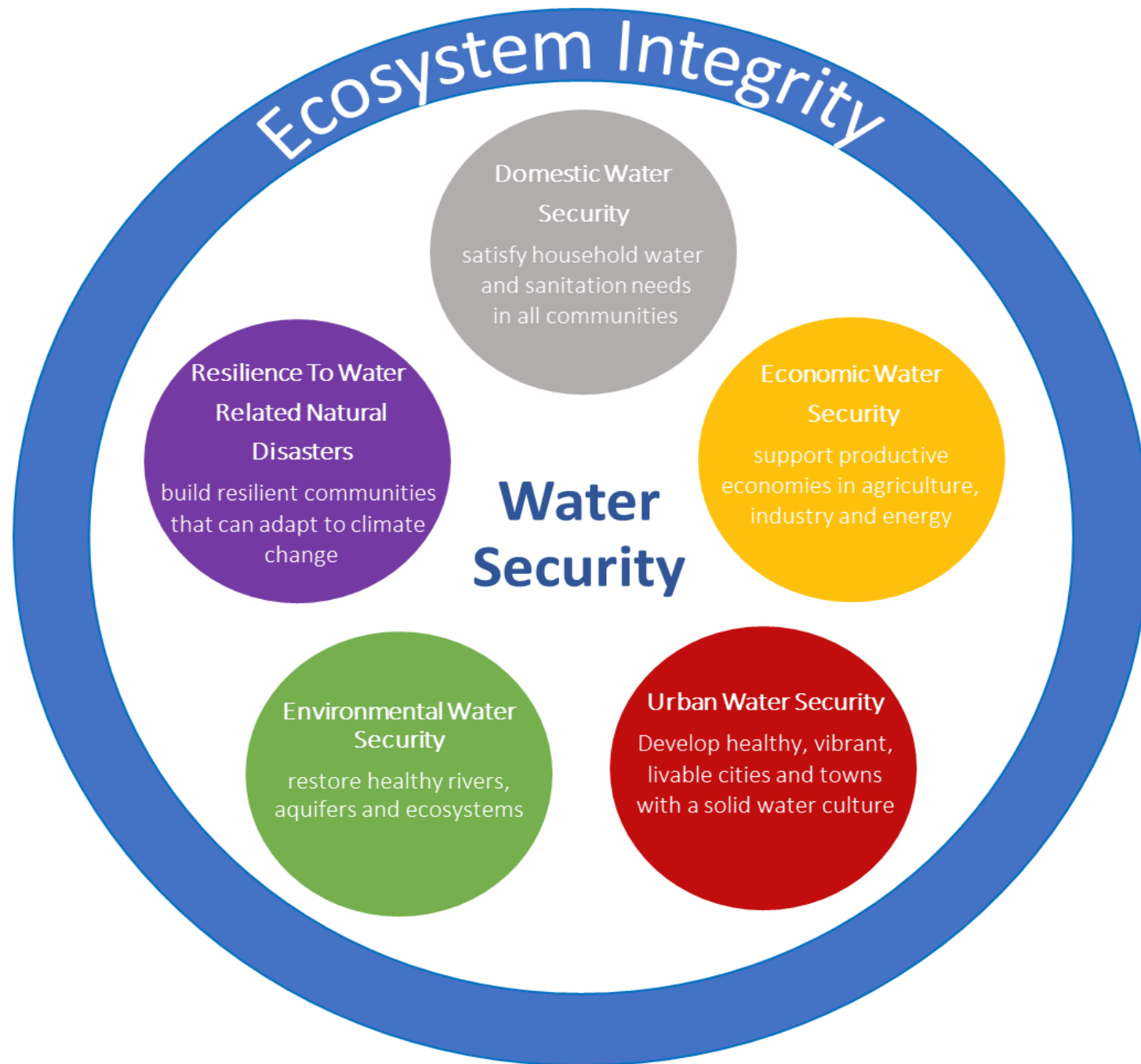


CapeNature



CITY OF CAPE TOWN  
ISIXEKO SASEKAPA  
STAD KAAPSTAD







# WATER FUND | To consider

## **Local aspects**

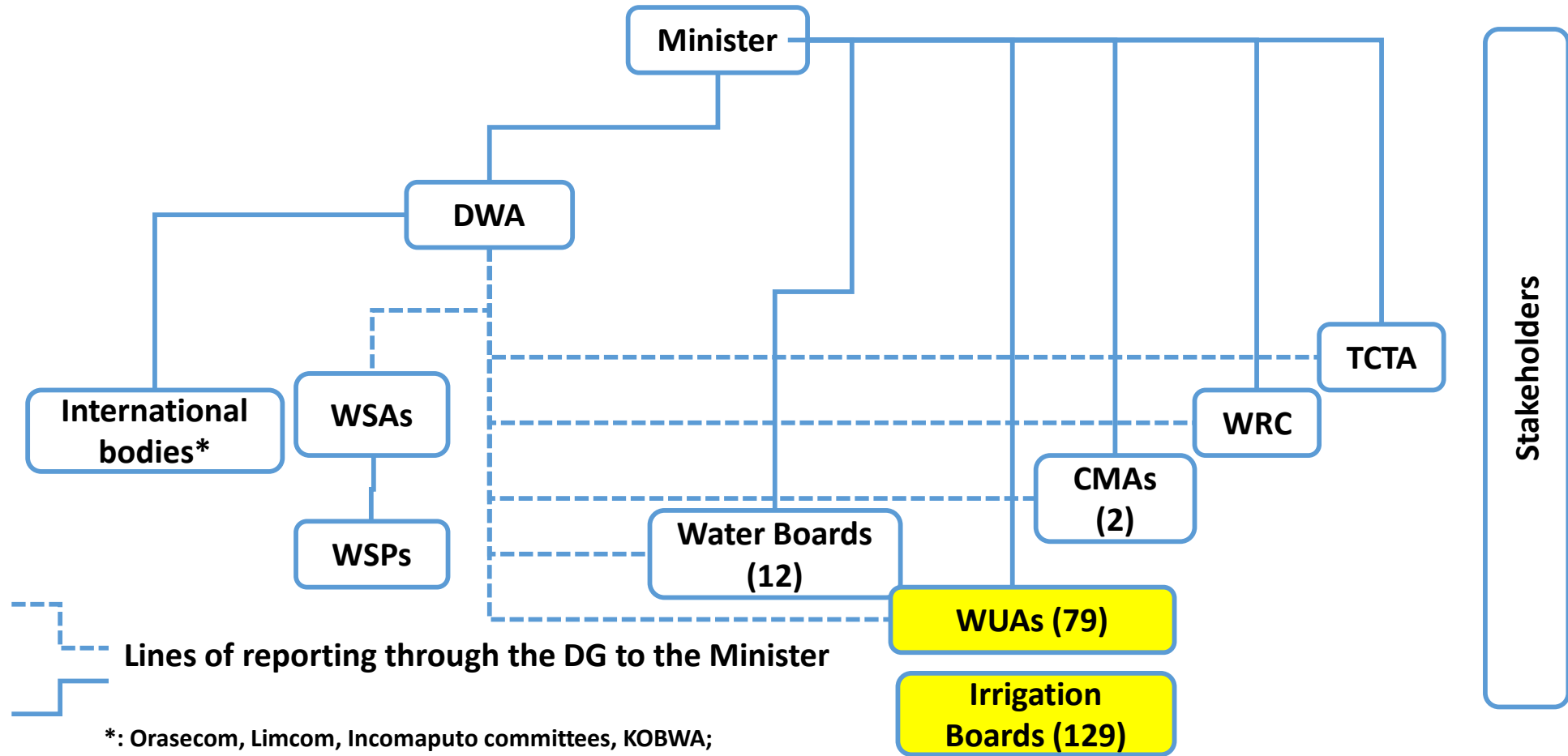
1. Domestic water security
2. Urban water security
3. Economic water security
4. Water management

## **Broader issues**

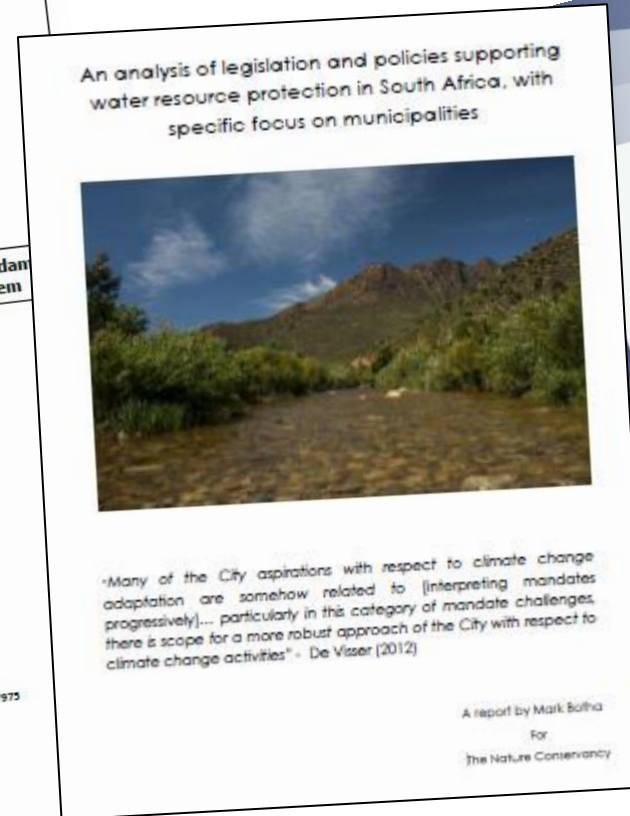
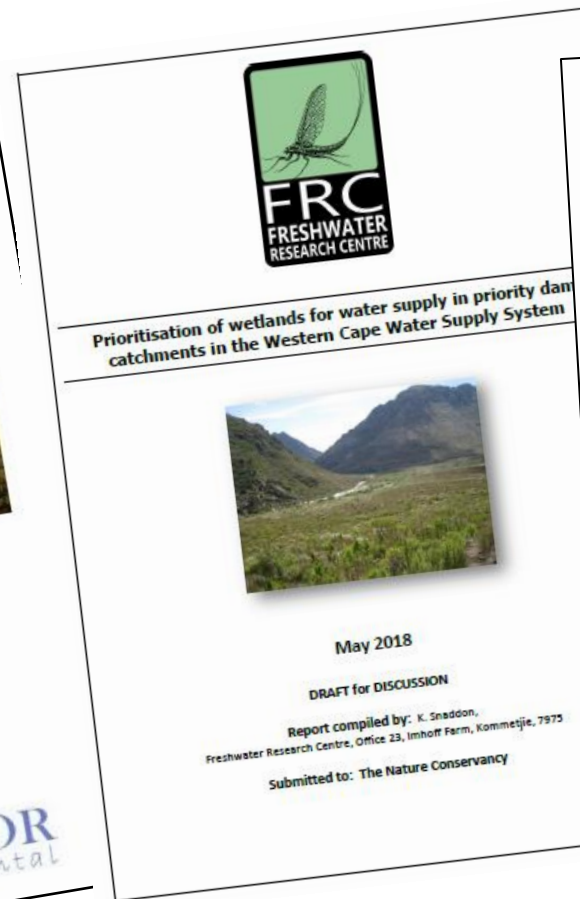
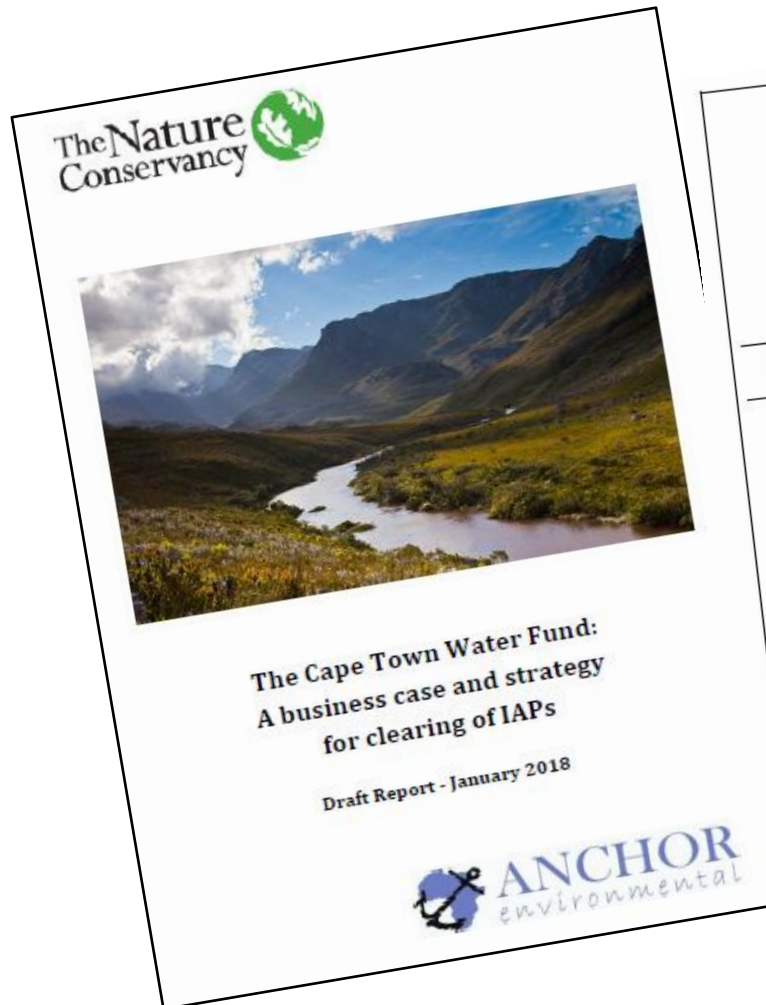
5. Risk and disaster management; resilience
6. Governance
7. Geography
8. Environmental
9. Land use



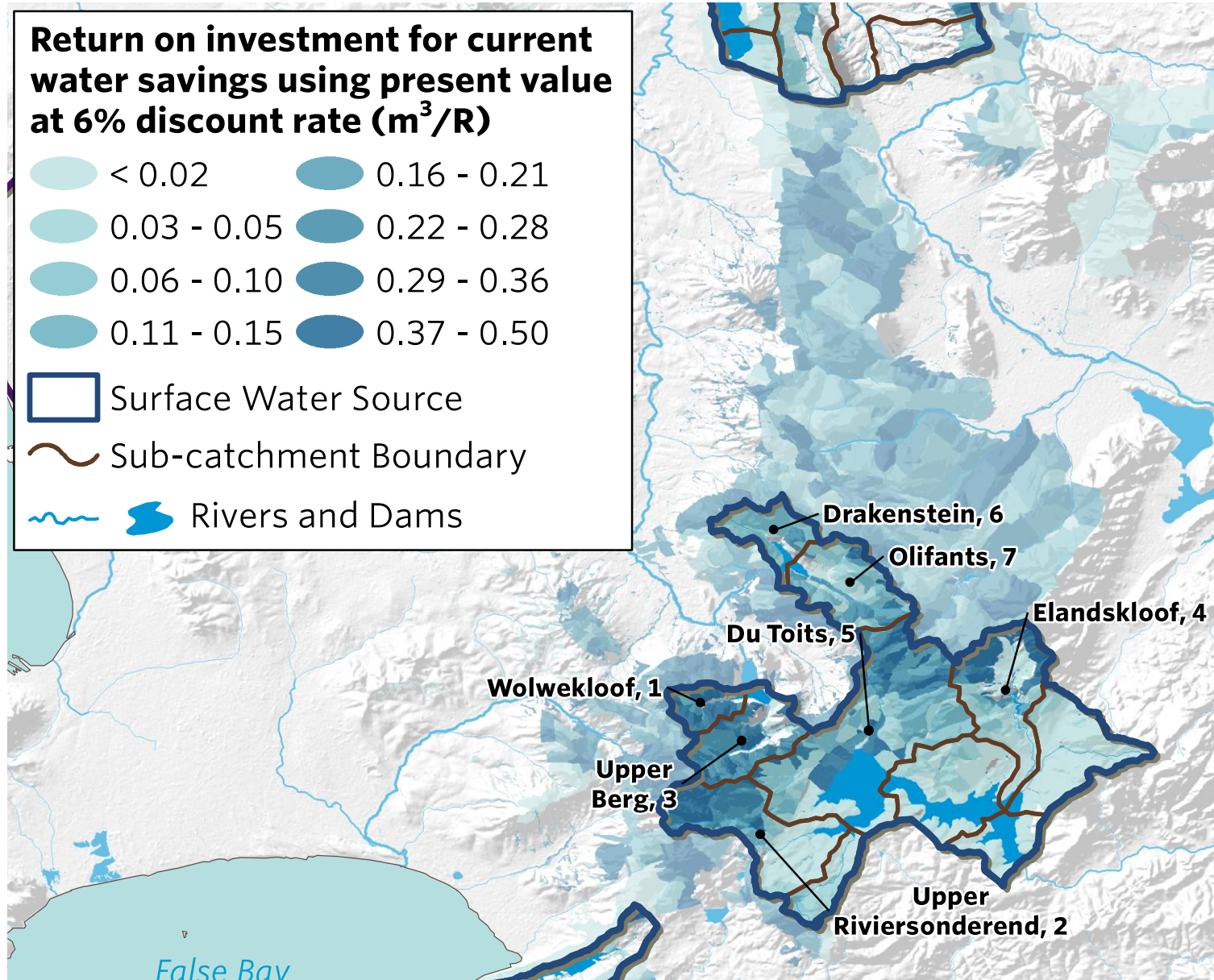
# Current Institutional Arrangements

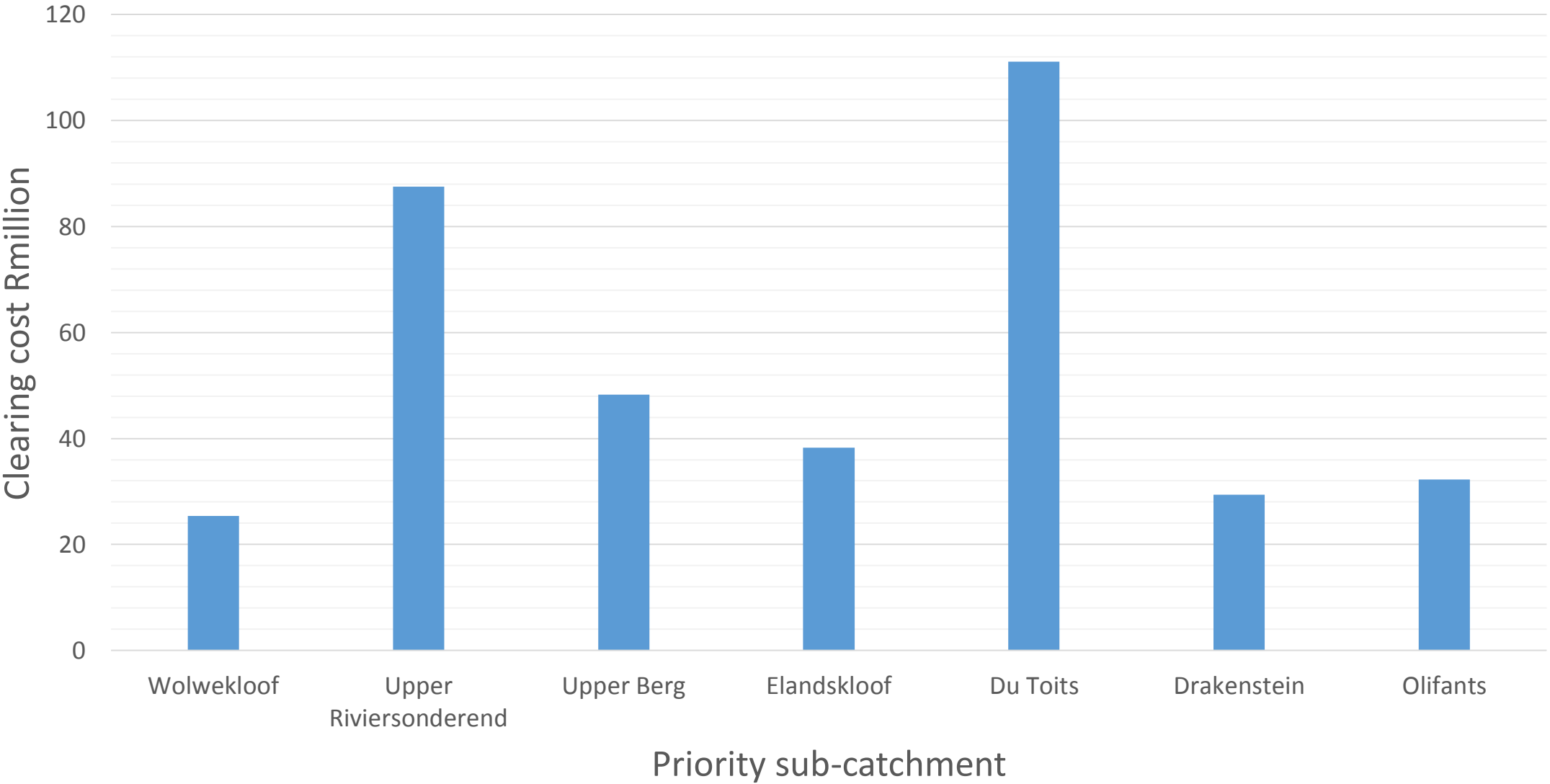














# WATER FUND | Role of a Water Fund

- Platform to envision, finance and improve water security
- Monitoring, research
- Influence water-related public policy, governance and decision making
- Encourage and drive projects using natural solutions
- Convene stakeholders to work collectively for impact at scale

# WATER FUND | Way forward

